



Ecografo GE Logiq V2

Configurabile con sonde a scelta

Prezzo: corpo macchina 5000€ + iva



LOGIQ V2

Simple. Fast. Precise.

Empowering Point of Care Medicine.



Challenges in Point of Care:

Chronic patient management. Needle guidance. Action-oriented patient care. Physicians who use ultrasound at the point of care asked GE for a portable system that's simple, fast and precise.

Designed for Point of Care

See clearly. See quickly. Guide precisely. Those were the values users requested that drove the creation of the LOGIQ™ V2. The versatile LOGIQ V2 system accommodates a wide range of exams supporting a variety of clinical areas such as primary care, internal medicine, podiatry, regional anesthesia and musculoskeletal. The system delivers console performance in a portable format that's simple, fast and precise.

Simple

With its compact design featuring a large LCD display – and standard battery back-up, the LOGIQ V2 fits into small spaces and easily maneuvers where you need it.

The LOGIQ V2 gives you access to real-time guidance to support exam efficiency and accuracy:

- **Onboard help** – Interactive access to tutorials on settings, operation, connectivity, and maintenance, plus a link to the user manual for more details.
- Optimize B-Mode image to help improve contrast resolution using **Auto Optimization**.
- **Scan Coach*** – Innovative scan plane reference tool that displays reference images, animations, and schematics during live scanning.



Fast

Push just a few buttons to enhance exam efficiency.

With the LOGIQ V2, you get fast, accurate information with few keystrokes.

- Keep imaging protocols at your fingertips with **Scan Assistant** to reduce keystrokes by as much as 22 percent¹.
- Automate measurement of intima-media thickness for fast carotid exams with **Auto IMT**.
- **Auto Spectral Optimization (ASO)** helps baseline, invert, optimize velocity scale (on live image) and angle correction.
- Transfer a copy of the entire study in DICOM® or Raw DICOM format. These images can be "imported" back onto the system for viewing at a later date.

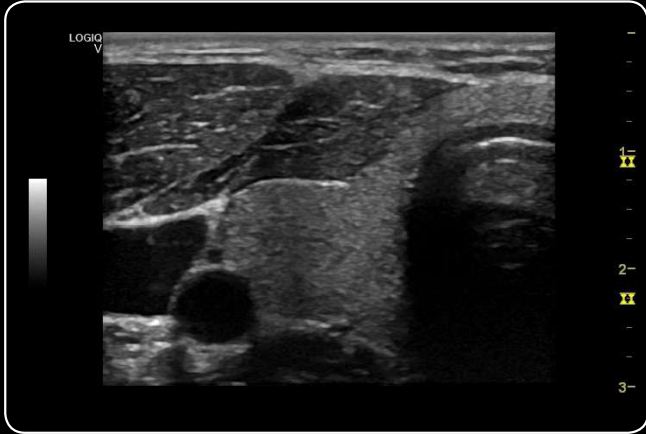
Precise

The compact LOGIQ V2 includes many advanced imaging technologies from decades of GE experience, including:

- **LOGIQ View** gives you real-time representation of long anatomical structures that might not be seen in a single image.
- High resolution even at deep penetration with Coded Harmonic Imaging.
- Reduce noise while enhancing true tissue detail with Real Time Speckle Reduction Imaging (SRI-HD).
- Enhance your ability to visualize tissue interfaces and differentiate borders with CrossXBeam.™
- **Needle Recognition:** The LOGIQ V2 uses two types of ultrasound: One for tissue and one for metal. This helps the needle stand out and allows separate control of the needle appearance.

*Scan Coach can be accessed through the Scan Assistant feature.

¹Based on internal study done with third-party consultants on LOGIQ E9, and software V&V documents.



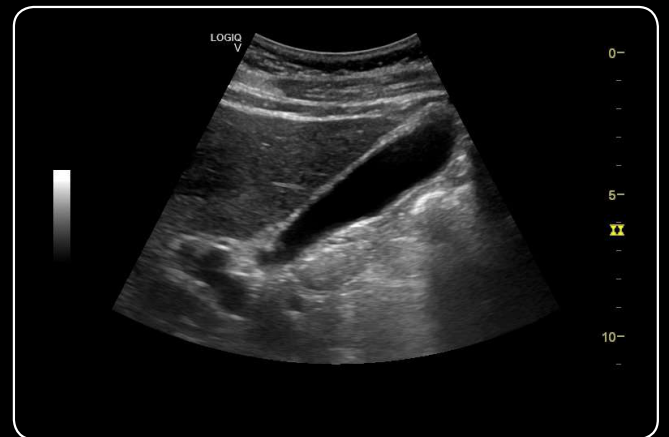
B-Mode Thyroid



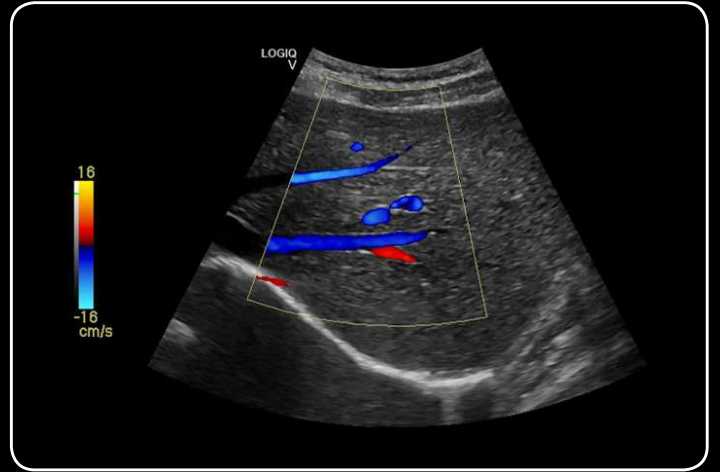
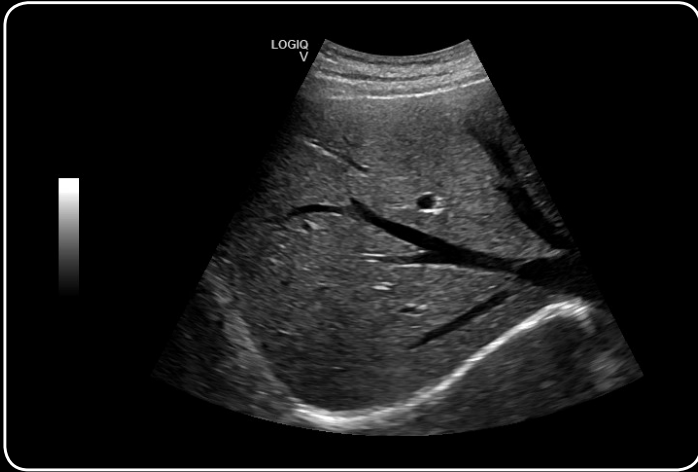
Pulse Wave Doppler - Carotid



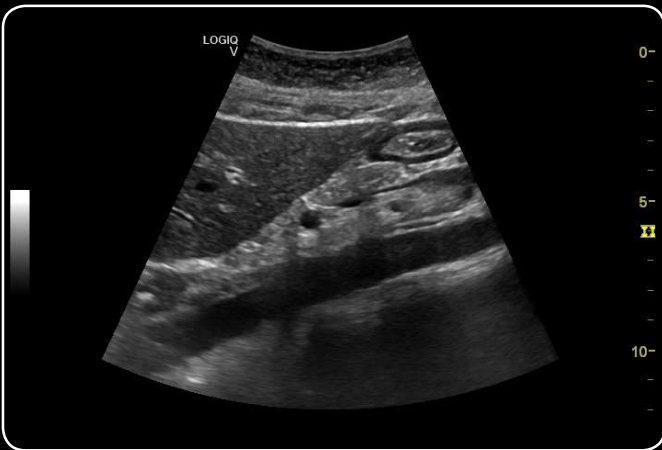
Morrison's Pouch



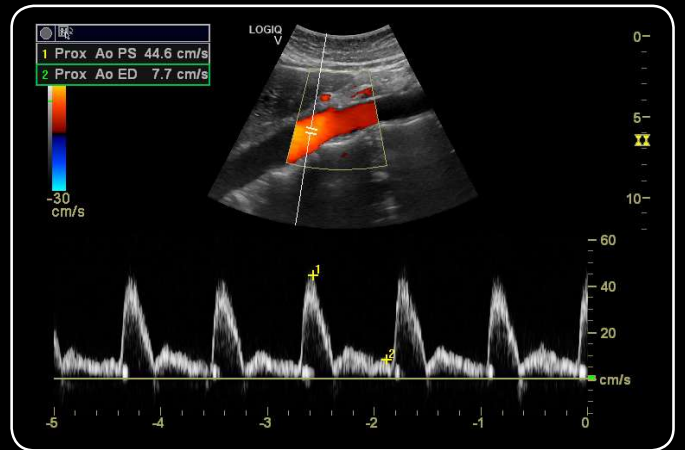
Sagittal View of Gall Bladder



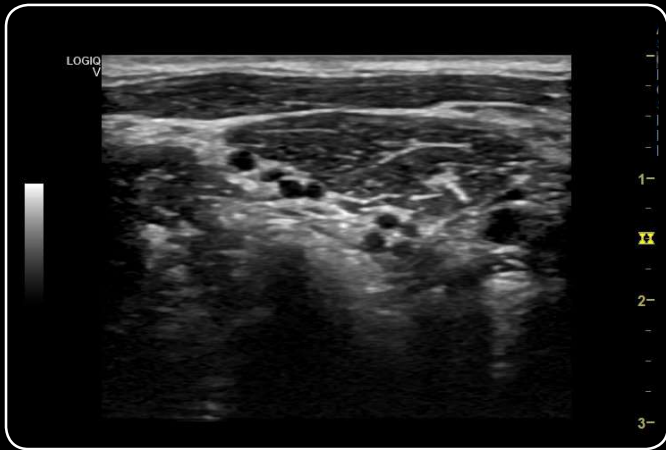
CrossXBeam – Enhances your ability to visualize tissue interfaces and differentiate borders, using spatial compound imaging technology.



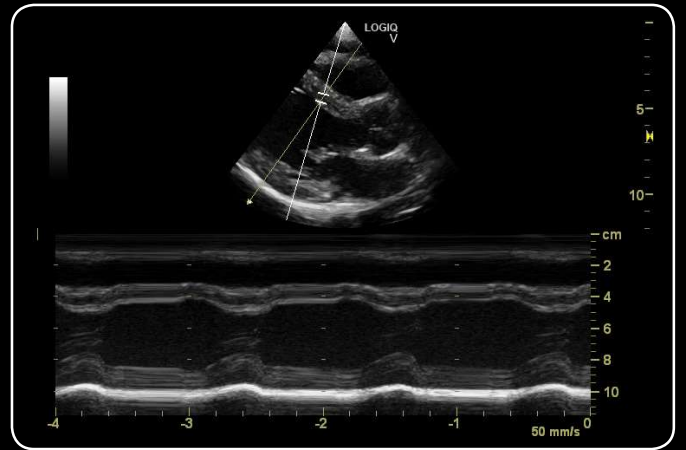
Proximal Aorta



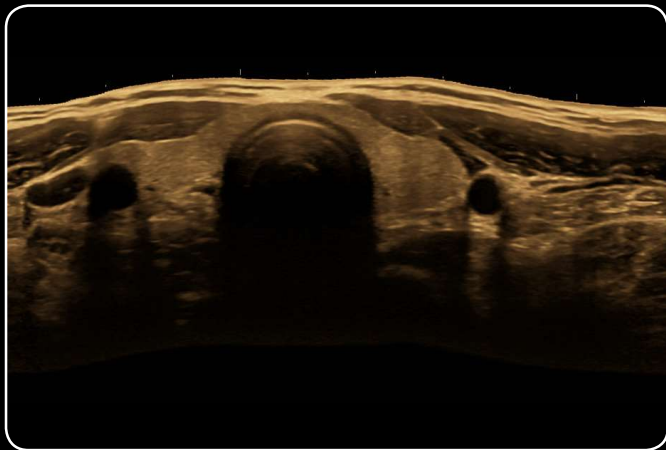
Aorta Using Pulse Wave Doppler



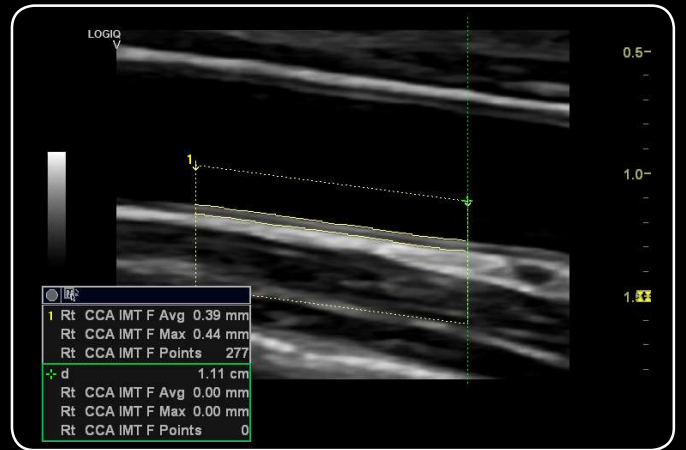
Brachial Plexus



Anatomical M-Mode



Thyroid with LOGIQ View



Carotid with IMT

About GE Healthcare

GE Healthcare provides transformational medical technologies and services to meet the demand for increased access, enhanced quality and more affordable healthcare around the world. GE (NYSE: GE) works on things that matter - great people and technologies taking on tough challenges. From medical imaging, software & IT, patient monitoring and diagnostics to drug discovery, biopharmaceutical manufacturing technologies and performance improvement solutions, GE Healthcare helps medical professionals deliver great healthcare to their patients.

GE Healthcare
9900 Innovation Drive
Wauwatosa, WI 53226
U.S.A.

www.gehealthcare.com

Data subject to change.

©2016 General Electric Company. March 2016/JB38778US

GE, GE Monogram, LOGIQ, and CrossXBeam are trademarks of General Electric Company.

Not all features or specifications described in this document may be available in all probes and/or modes.

DICOM is the registered trademark of the National Electrical Manufacturers Association for its standards publications relating to digital communication of medical information. Third party trademarks are the property of their respective owners

GE Medical Systems Ultrasound & Primary Care Diagnostics, LLC, a General Electric Company, doing business as GE Healthcare.

Reproduction in any form is forbidden without prior written permission from GE. Nothing in this material should be used to diagnose or treat any disease or condition. Readers must consult a healthcare professional.

